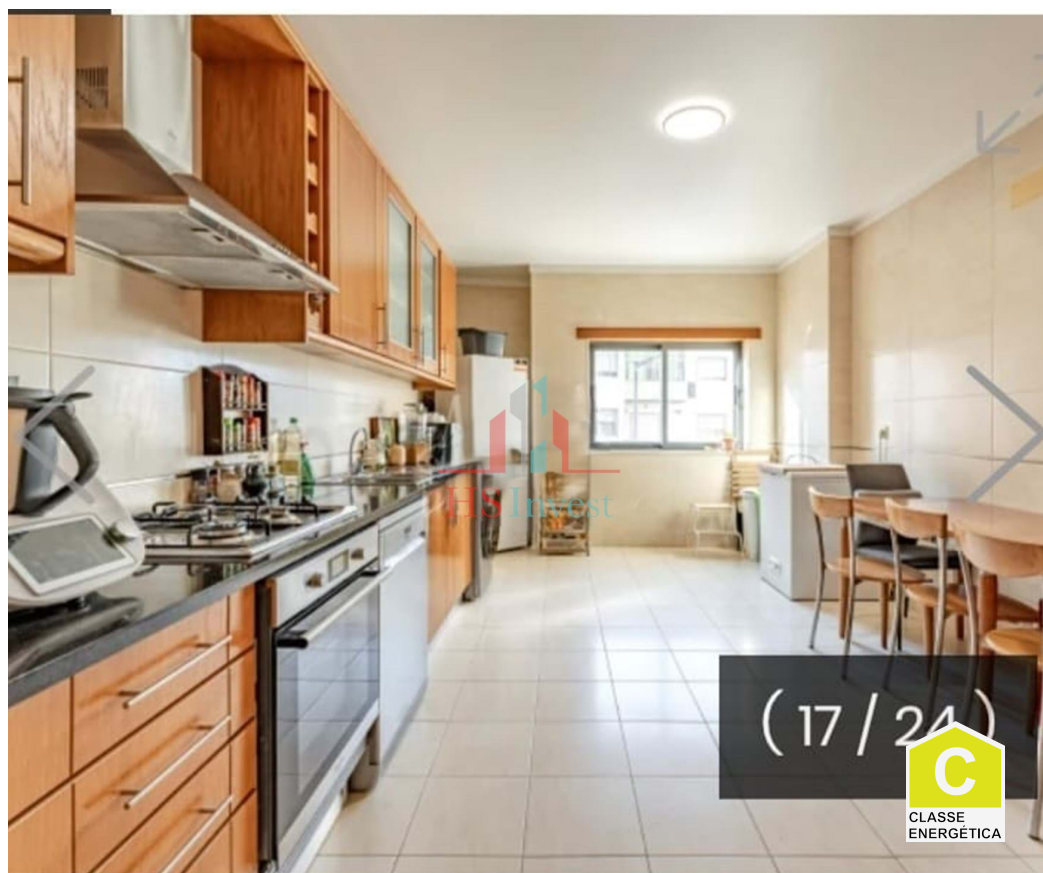




Nossa Senhora de Fátima - Apartment



2

Bedrooms



1

Bathrooms



122

Area (m²)



Garage

950 € / Month

(EUR €)

T2 With Box Rental

T2 with Box and Elevator

Discover this charming 2 bedroom apartment in the heart of the picturesque town of Entroncamento. Centrally located and with a gross floor area of 122 square meters, this used apartment offers a combination of comfort and convenience. Built in 2008, this property is located in a 5-storey building with a lift, garage and private garden.

Upon entering this cozy house, you will find an equipped kitchen, living room with fireplace and balcony overlooking the countryside and urbanization. Finishes include laminate flooring, built-in wardrobes and double glazing to ensure a peaceful and welcoming environment. The class C energy certificate ensures energy efficiency.



Helder Henriques

+351 969 069 785*

helder.henriques@hsinvest.pt

T +351 969 069 785* · T +351 937 127 419* · E geral@hsinvest.pt

Avenida Corvo Marinho N° 184 2890-342

AMI 18123

* (Call to national fixed network) | * (Call to national mobile network)



The location of this property offers a variety of amenities within walking distance. With a variety of restaurants, cafes and supermarkets nearby, you will have everything you need at your fingertips. Additionally, several schools and parks are just minutes away, making this location ideal for families.

If you are looking for a stylish home in a warm and convenient environment, this apartment in Entroncamento is the perfect place for you. Don't miss the opportunity to take advantage of all the amenities that this charming city has to offer. Schedule a visit today and let yourself be enchanted by this exclusive property.

Rental Conditions:

Salary Receipts

Employment Contract

IRS

1 - Income

2 - Security Deposits

Property Features

- Fitted wardrobes
- Equipped kitchen
- Proximity: Shopping, Restaurants, City, Open field, Pharmacy, Public Transport, Schools, Playground
- Garage
- Floors: 5
- Views: Countryside views, Village view, Urbanization view
- Lift
- Electric garage gate
- Main drainage
- Central location
- Energetic certification: C
- Balcony
- Fireplace
- Laminated floor
- Garden
- Built year: 2008
- Drive way
- Video entry system
- Double glazing
- Pantry
- Quiet Location
- Security door
- Mains water



Helder Henriques

+351 969 069 785*

helder.henriques@hsinvest.pt

T +351 969 069 785* · T +351 937 127 419* · E geral@hsinvest.pt

Avenida Corvo Marinho N° 184 2890-342

AMI 18123

* (Call to national fixed network) | * (Call to national mobile network)